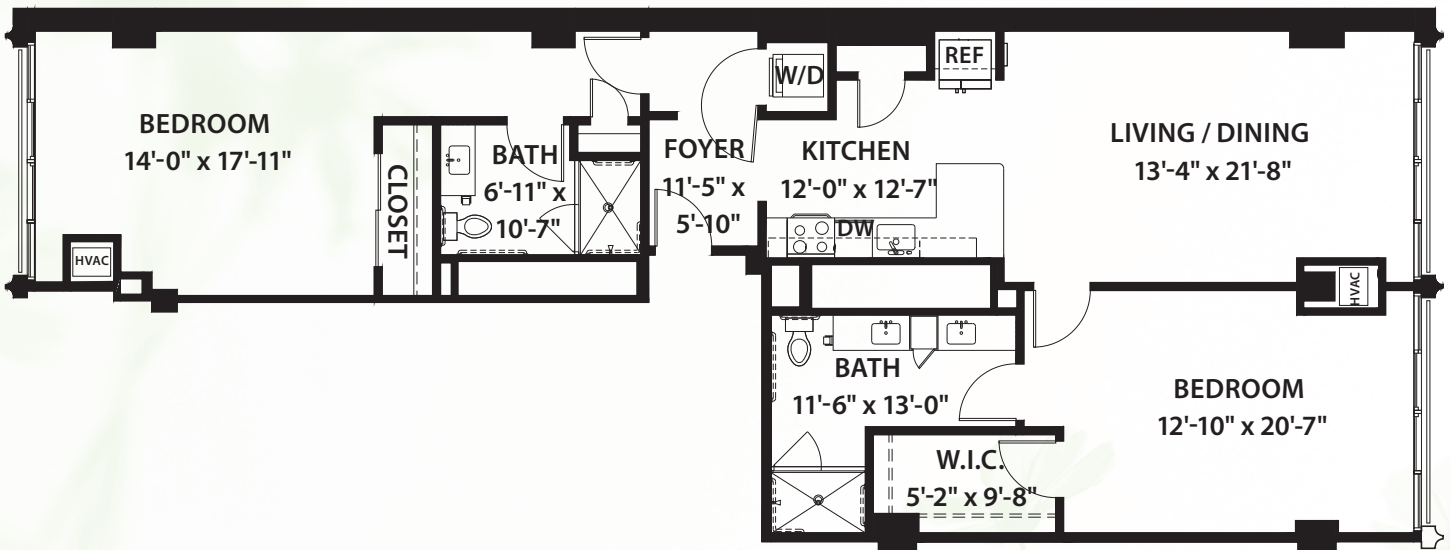


*Signature Series*  
**#319 (Type B)**

**TWO BEDROOM / TWO BATHROOM / 1,553 SQ.FT.**  
**CLUB TOWER / GARDEN & CITY VIEW**



\* Size and dimensions may vary

 **Canterbury Court**  
*Where lives blossom*



3750 Peachtree Road, N.E., Atlanta, GA 30319 | 404-365-3163 | [CanterburyCourt.org](http://CanterburyCourt.org)